



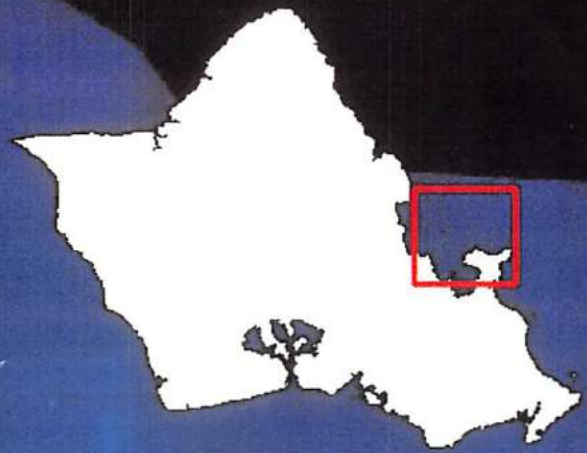
# Kaneohe Bay

*In case of emergency or incident, contact:*

US Coast Guard Honolulu

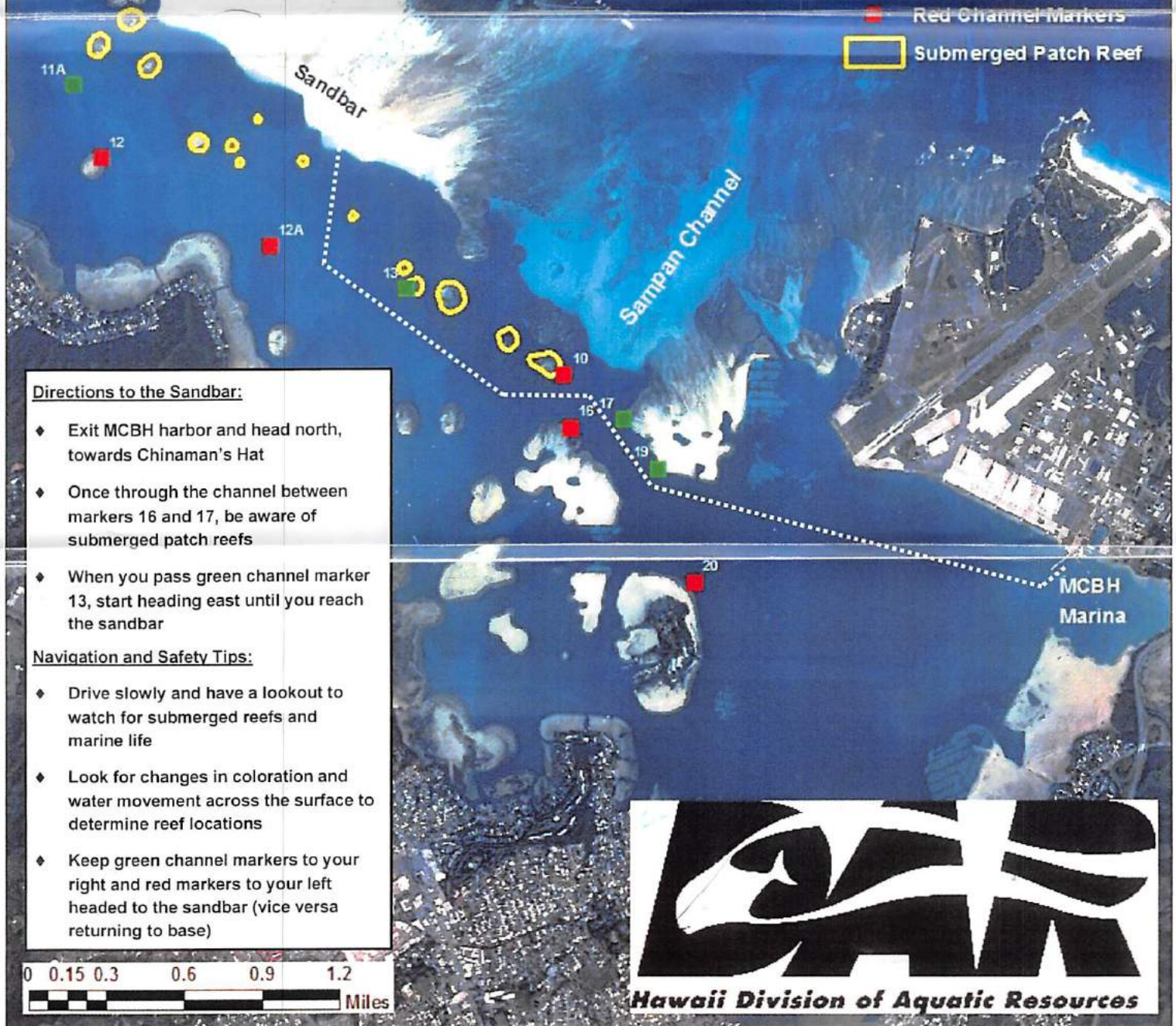
Radio Channel 16 to report emergencies

Phone 808-842-2656 to report incidents



## Legend

-  Green Channel Markers
-  Red Channel Markers
-  Submerged Patch Reef



### Directions to the Sandbar:

- ◆ Exit MCBH harbor and head north, towards Chinaman's Hat
- ◆ Once through the channel between markers 16 and 17, be aware of submerged patch reefs
- ◆ When you pass green channel marker 13, start heading east until you reach the sandbar

### Navigation and Safety Tips:

- ◆ Drive slowly and have a lookout to watch for submerged reefs and marine life
- ◆ Look for changes in coloration and water movement across the surface to determine reef locations
- ◆ Keep green channel markers to your right and red markers to your left headed to the sandbar (vice versa returning to base)



**Hawaii Division of Aquatic Resources**



# Respect the Reef

*Reefs are alive, and very fragile*

## Anchoring

- ◆ Anchor on sandy areas
  - Do not anchor on corals or other reef structures
- ◆ Make sure anchor is secure
  - Dragged anchors can damage corals and substrate

## On the Reef

- ◆ Walking on the reef can damage reef structure
- ◆ Be careful to avoid bumping or kicking the surroundings when swimming
  - Corals are fragile and easily broken
- ◆ Avoid stirring up sediments
  - Sediments can settle on corals and smother them
- ◆ Do not grab or touch corals, urchins, sea turtles, algae, or other organisms
  - Marine life is protected by law
  - It can be dangerous to handle marine life
  - Invasive algae can be spread by broken fragments

# Marine Life



Green Sea Turtle (Honu)

*Protected by law*

Finger coral

*Common in Kaneohe Bay*



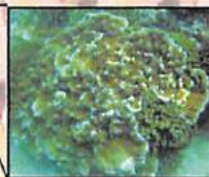
Rice coral

*Common in Kaneohe Bay*



Collector urchin

*Native, consumes invasive algae*



Smothering seaweeds \*

\* Banded urchin (wana)

*Long spines can be dangerous*



*Invasive: Overtakes reefs, spreads by fragmentation*



\* - harmful

# Navigating the Bay

**A Guide to Kaneohe Bay's Patch Reefs**

Hawaii Department of Land and Natural Resources

Division of Aquatic Resources

[www.dlnr.hawaii.gov/dar](http://www.dlnr.hawaii.gov/dar)